

Tiger-Vac®

...The name to vacuum with

INDUSTRIAL VACUUM CLEANER SYSTEMS WITH (PFS) PNEUMATIC FILTER SHAKER BY INVERSION ELECTRICALLY OPERATED, THREE PHASE, FOR CONTINUOUS DUTY MODEL TV-3000 (PFS) STATIC DISSIPATIVE/GROUNDED



MODEL TV-3000 (PFS)

- The Tiger-Vac PFS series is designed for use in a wide range of industrial applications, such as: Machining, Ceramics, Food, Construction, Textiles, etc.
 - PFS series vacuums are equipped with an airflow inversion valve. This device allows the airflow produced by the vacuum motor to be inverted to power the pneumatic filter shaker system. The standard configuration features a manually operated inversion valve. A motorized inversion valve with timer is available as an option for totally automatic operation.
 - The innovative PFS filtration system creates a deep cyclone within the filter chamber which separates the dust from the airflow. The cyclonic effect protects the filter cartridge and it allows large volumes of fine dust to be recovered.
 - The primary filter cartridge is made of spun bond polyester and has a large filtering surface area of 14 ft² (13.000 cm²). The primary filter cartridge is 99.5% efficient on 2 microns.
 - Model TV-3000 (PFS) is equipped with a regenerative blower with TEFC (Totally Enclosed Fan Cooled) induction motor rated for continuous duty.
- All PFS series vacuums feature a heavy duty construction and are mounted on an epoxy painted carriage with 4 wheels for maximum maneuverability. Model TV-3000 (PFS) has a 12.5 gal (50ℓ) detachable recovery tank (DT) with 4 wheels for quick and easy emptying.
 - The detachable recovery tank and filter chamber are available in epoxy painted steel or in stainless steel AISI 304.

Available options:

- Floater kit for liquid recovery
- Separator cover for filling standard open top 55 gal (220 ℓ) drums
- Poly liner recovery bag

Toll free telephone: 1 800 668-4437
Toll free fax: 1 800 668-4439

Tiger-Vac Inc. (USA)
73 S.W. 12 Ave. Bldg.1, Unit 7
Dania, FL 33004
USA
Tel.: (954) 925-3625
Fax.: (954) 925-3626
E-mail: sales@tiger-vac.com

Web Site: <http://www.tiger-vac.com>

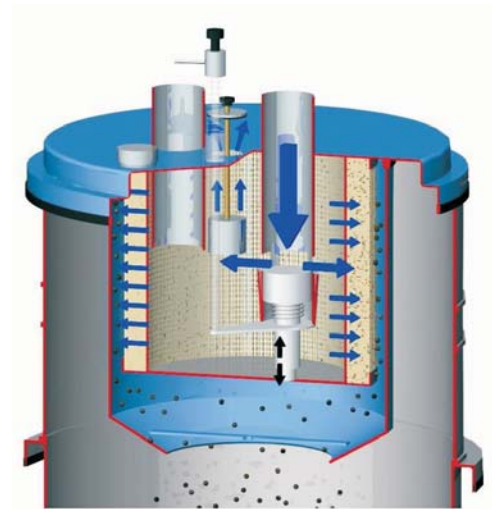
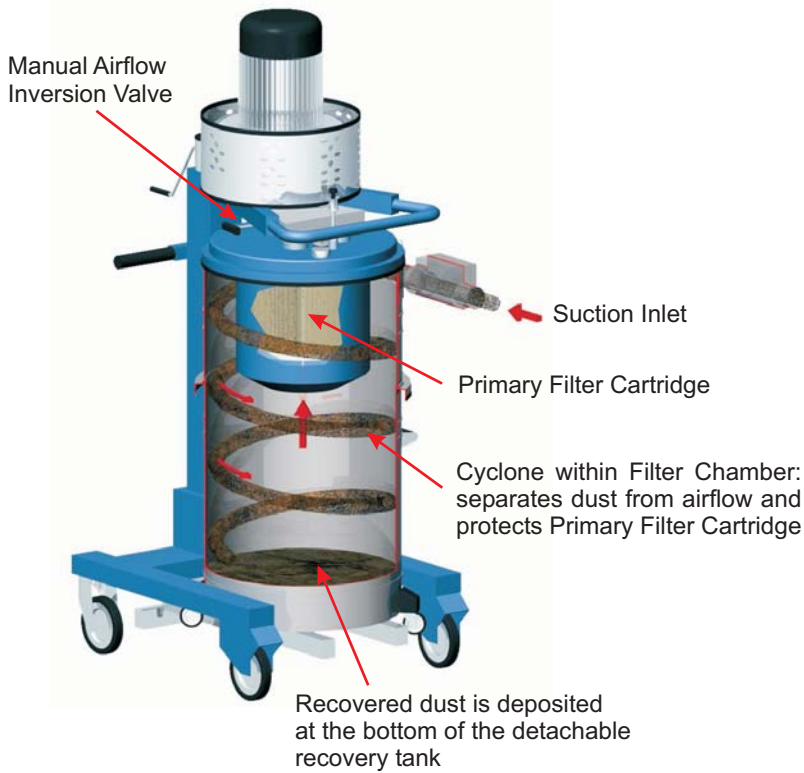
Tiger-Vac International Inc.
2020 Dagenais Blvd. West
Laval, Quebec
Canada H7L 5W2
Tel.: (450) 622-0100
Fax.: (450) 625-3388
E-mail: support@tiger-vac.com

Technical Specifications

Voltage	460V /60 Hz Three Phase	575V /60 Hz Three Phase
Power	5 HP (3.6 kW)	5 HP (3.6 kW)
Current Draw	7.1 amps	5.7 amps
Airflow (max)	206 CFM	206 CFM
Vacuum (max)	155" H ₂ O	155" H ₂ O
Vacuum Relief Valve (Intervention)	From 100" to 155" H ₂ O	From 100" to 155" H ₂ O
Noise Level	74 dB(A)	74 dB(A)

Dimensions

Suction Inlet	Ø60mm
Recovery Capacity	12.5 gal (50 ℓ)
Length	29.5" (75cm)
Width	25" (63cm)
Height	51" (130 cm)
Weight	225 lbs (102 kg)
Primary Filter Surface Area	14 ft ² (13.000 cm ²)



Pneumatic Filter Shaker (PFS): By activating the airflow inversion valve the airflow produced by the motor is inverted to power the pneumatic filter shaker