



# Tiger-Vac®

...The name to vacuum with

## INDUSTRIAL VACUUM CLEANER SYSTEMS WITH (PFS) PNEUMATIC FILTER SHAKER BY INVERSION WITH DUAL MOTORS, ELECTRICALLY OPERATED, SINGLE PHASE MODEL TV-M1002 (PFS)



MODEL TV-M1002 (PFS)

- The Tiger-Vac PFS series is designed for use in a wide range of industrial applications, such as: Machining, Ceramics, Food, Construction, Textiles, etc.
- PFS series vacuums are equipped with an airflow inversion valve. This device allows the airflow produced by the vacuum motors to be inverted to power the pneumatic filter shaker system. The standard configuration features a manually operated inversion valve. A motorized inversion valve with timer is available as an option for totally automatic operation.
- The innovative PFS filtration system creates a deep cyclone within the filter chamber which separates the dust from the airflow. The cyclonic effect protects the filter cartridge and it allows large volumes of fine dust to be recovered.
- The primary filter cartridge is made of spun bond polyester and has a large filtering surface area of 13.000 cm<sup>2</sup> (14 ft<sup>2</sup>). The primary filter cartridge is 99.5% efficient on 2 microns.
- The TV-M1002 (PFS) is equipped with two single phase motors which can be operated independently or simultaneously.
- All PFS series vacuums feature heavy duty construction and are mounted on an epoxy painted chasis with 4 wheels for maximum maneuverability. Model TV-M1002 (PFS) has a 100L (25 gal) detachable recovery tank with 4 wheels for quick and easy emptying.
- The detachable recovery tank (DT) and filter chamber are available in epoxy painted steel or in stainless steel AISI 304.

Available options:

- Coolant/Chip recovery kit with sieve basket and liquid expulsion gun
- Separator cover for filling standard open top 220L (55 gal) drums
- Scrap recovery kit
- Poly liner recovery bag

**Toll free telephone: 1 800 668-4437**

**Toll free fax: 1 800 668-4439**

***Tiger-Vac Inc. (USA)***  
**73 S.W. 12 Ave. Bldg.1, Unit 7**  
**Dania, FL 33004**  
**USA**

**Tel.: (954) 925-3625**

**Fax.: (954) 925-3626**

**E-mail: [sales@tiger-vac.com](mailto:sales@tiger-vac.com)**

**Web Site: <http://www.tiger-vac.com>**

***Tiger-Vac International Inc.***  
**2020 Dagenais Blvd. West**  
**Laval, Quebec**  
**Canada H7L 5W2**

**Tel.: (450) 622-0100**

**Fax.: (450) 625-3388**

**E-mail: [support@tiger-vac.com](mailto:support@tiger-vac.com)**

INDUSTRIAL VACUUM CLEANER SYSTEM WITH PNEUMATIC FILTER SHAKER

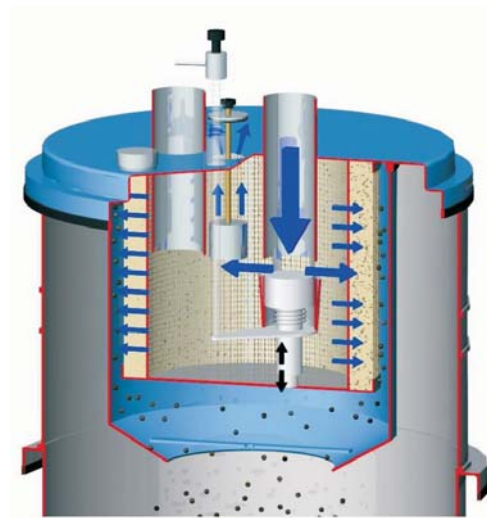
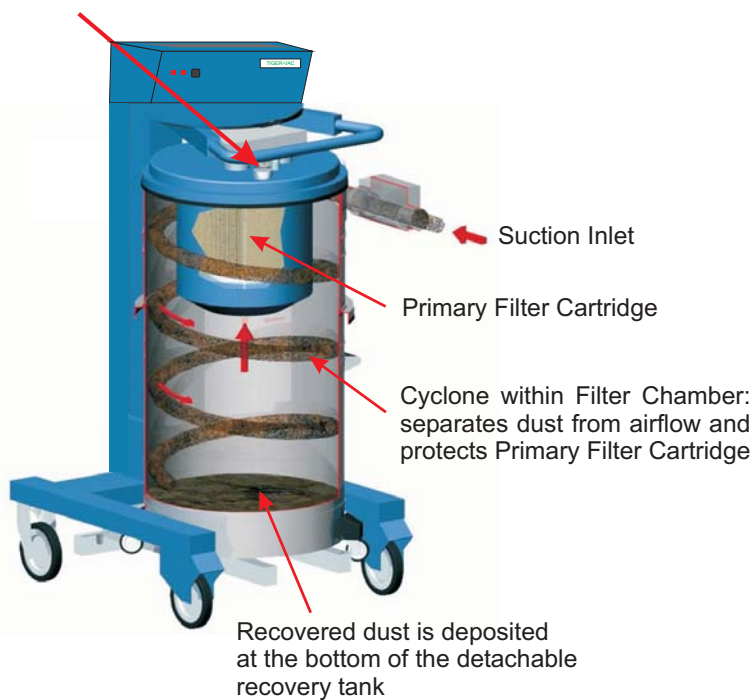
**Technical Specifications**

Voltage	120V 60 Hz
Power	2000 Watts
Current Draw	17 amps
Airflow (max)	200 CFM
Vacuum (max)	90" H <sub>2</sub> O
Noise Level	70 dB(A)

**Dimensions**

Suction Inlet	Ø60mm
Recovery Capacity	25 gal (100ℓ)
Length	31.5" (80 cm)
Width	25" (63 cm)
Height	58" (147 cm)
Weight	248 lbs (112 kg)
Primary Filter Surface Area	14 ft <sup>2</sup> (13.000cm <sup>2</sup> )

Manual Airflow Inversion Valve



**Pneumatic Filter Shaker (PFS):**  
 By activating the airflow inversion valve the airflow produced by the motors is inverted to power the pneumatic filter shaker