

# CD-2600 CR

ELECTRICALLY OPERATED CLEANROOM VACUUM CLEANER SYSTEM  
TEFC SINGLE AND THREE PHASE CONTINUOUS DUTY  
MODEL CD-2600 EX CR (MRP) (suitable for Pharmaceutical applications)



## Characteristics:



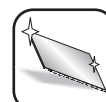
Cleanroom compatible



Pharmaceutical applications



HEPA/ULPA available



Stainless Steel



Manual reverse Purge (MRP)



Continuous duty

CLEANING MACHINES CLASS 1611 01 & 1611 81.  
All the electrical components are recognized or certified UL or CSA and qualify for all applicable requirements.  
CAN/CSA – C22.2 No. 243-01 & UL Std. No. 1017.

- For dry recovery only. Controlled environments and ISO Class 4 (former Class 10) cleanrooms. Ideal for Pharmaceutical plants & food processing industries. Made to be used in conjunction with processing machines.
- Continuous duty single & 3 phase. All the electrical components are recognized UL or CSA, qualifies for all applicable requirements and meets the CE electrical code requirements.
- Stainless steel AISI 304 filter chamber, lid and recovery tank with heavy duty powder coated cabinet
- Recovery tank 9.5 gal. (36 litres) (electropolished finish available).
- Optional HEPA or ULPA filter: HEPA Filter efficiency of 99.995% @ 0.3 micron. Tested: IEST RP-CC001.3. is available upstream. ULPA Filter efficiency of 99.999% @ 0.12 micron. Tested: IEST RP-CC001.3. Filtration efficiency of 99.9995% @ 0.18 micron. Tested: IEST RP-CC001.3. The HEPA/ULPA filter is located at the exhaust venting port (downstream).
- Oversized PTFE laminated filter cartridge with reverse purge system (operated automatically or manually). Filtration efficiency 99.95% @ 0.5 micron
- The vertical base of this model is mounted on 4 wheels for easy manoeuvrability and facilitates access to processing equipment.

**Tiger-Vac®**  
...The name to vacuum with

Tiger-Vac Inc. (USA)  
73 S.W. 12 Ave. Bldg. 1, Unit 7  
Dania, FL 33004  
USA  
Tel.: (954) 925-3625  
Fax.: (954) 925-3626  
E-mail: sales@tiger-vac.com

Tiger-Vac International Inc.  
2020 Dagenais Blvd. West  
Laval, Quebec  
Canada H7L 5W2  
Tel.: (450) 622-0100  
Fax.: (450) 625-3388  
E-mail: support@tiger-vac.com

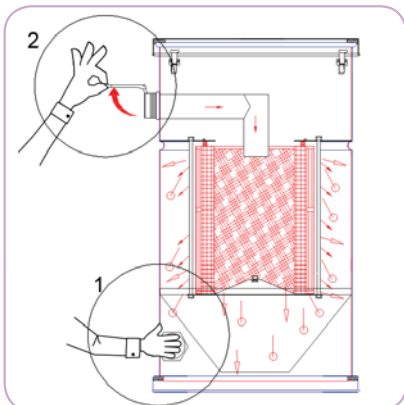
Toll free telephone: 1 800 668-4437 (Fax: 1 800 668-4439)  
<http://www.tiger-vac.com>

# Technical Specifications

Model	Phase/Volts 60 Hz	Electric current	Electric power	Airflow	Vacuum at sealed orifice	Recovery capacity
CD-2600 EX CR (MRP)	1/120	17.2 A	2 HP	160 CFM	70"+ H <sub>2</sub> O	9.5 Gal.
	1/230	8.6 A	2 HP	160 CFM	70"+ H <sub>2</sub> O	9.5 Gal.
	3/230	5.8 A	2 HP	160 CFM	70"+ H <sub>2</sub> O	9.5 Gal.
	3/460	2.9 A	2 HP	160 CFM	70"+ H <sub>2</sub> O	9.5 Gal.
	3/575	2.3 A	2 HP	160 CFM	70"+ H <sub>2</sub> O	9.5 Gal.
CD-2600 EX CR (MRP)	1/230	14.5 A	3 HP	212 CFM	72"+ H <sub>2</sub> O	9.5 Gal.
	3/230	7.4 A	3 HP	212 CFM	72"+ H <sub>2</sub> O	9.5 Gal.
	3/460	3.7 A	3 HP	212 CFM	72"+ H <sub>2</sub> O	9.5 Gal.
	3/575	3.0 A	3 HP	212 CFM	72"+ H <sub>2</sub> O	9.5 Gal.

Dimensions: L26" (66cm) x W20" (50cm) x H75" (90cm). 247 lbs (112 kg)

Noise level: 68 dB(A) at 3.2'



## Manual Reverse Purge (MRP)

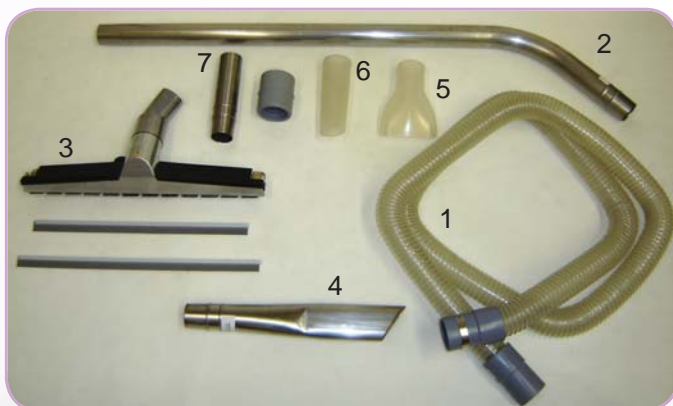
The Manual Reverse Purge (MRP) allows for the cleaning of caked-on powder off of the filter thus maximizing performance. The filter cleaning is achieved by having the air intake reversed through the filter thus purging the clogged filter.

The Manual Reverse Purge (MRP) works by :

1. Placing a hand over the opening to block the suction intake orifice for approximately 5 seconds while the vacuum is running. (No.1)
2. Then quickly open Purge Valve (No.2). Air is now flowing via the valve through to the filter.
3. Keep Purge Valve open for 1-2 seconds then close (repeat above steps 2 or 3 times).

Reverse Purge System will cause dust to fall off of the filter.

## Suggested optional Ø2" (50mm) Cleanroom tools and accessories



1. Clear urethane connexion/suction hose. To connect vacuum cleaner to processing equipment. Ø2.5" x 5' (64mm x 1.5m)  
Clear urethane connexion/suction hose. To connect vacuum cleaner to processing equipment to be used as a suction hose. Ø2.5" x 10' (64mm x 3m)
2. Wand, single band, 4' (1.22m). Aluminum.
3. Universal floor tool.
4. Crevice tool.
5. Tiger-Claw tool. Autoclavable. Made of clear foodgrade silicone.
6. Conical nozzle. Autoclavable. Made of clear foodgrade silicone.
7. Adaptor for use with Tiger-Claw tool and Conical Nozzle. Autoclavable. Electropolished stainless steel

Autoclavable tools and accessories are available.



Rearview showing the oversized HEPA filter



Connecting Suction Hose:  
5' (1.5m) x Ø2.5" (63mm)

## Alternate configurations



All powder coated.



Stainless Steel AISI 304

For complete details please visit our website: [WWW.TIGER-VAC.COM](http://WWW.TIGER-VAC.COM) or contact one of our technical representatives. Specifications are subject to change without notice. Images are for illustration purposes only. Tiger-Vac is a registered trademark.